



License No. 800025015  
FL License # CMTL-0003  
CLIA No. 10D1094068

# Certificate of Analysis

## Compliance Test

**REEFER'S BAY**  
275 MEDICAL DR 4783  
CARMEL, IN 46038

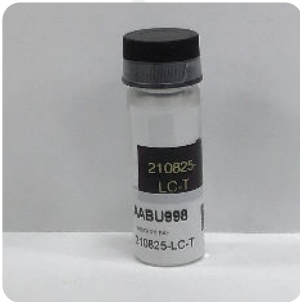
Batch # 210825-LC-T  
Batch Date: 2021-08-25  
Extracted From: Hemp

Test Reg State: Florida

Order # REE210826-080011  
Order Date: 2021-08-26  
Sample # AABU998

Sampling Date: 2021-08-27  
Lab Batch Date: 2021-08-27  
Completion Date: 2021-09-03

Initial Gross Weight: 6.822 g



Product Image



Potency Panel Not Included

### Terpenes Summary

Analyte	Result (mg/g)	(%)
(R)-(+)-Limonene	194.736	19.474%
trans-Caryophyllene	183.845	18.384%
beta-Myrcene	150.28	15.028%
Linalool	46.803	4.68%
Farnesene	31.126	3.113%
beta-Pinene	30.66	3.066%
Valencene	30.429	3.043%
alpha-Pinene	27.006	2.701%
alpha-Humulene	15.034	1.503%
Total Terpeneol	14.993	1.499%
alpha-Bisabolol	13.54	1.354%
Sabinene Hydrate	12.953	1.295%
alpha-Phellandrene	8.86	0.886%
Camphene	5.42	0.542%
Terpinolene	3.962	0.396%
Ocimene	3.674	0.367%
Camphors	2.818	0.282%
Caryophyllene oxide	2.447	0.245%
3-Carene	2.172	0.217%
trans-Nerolidol	1.486	0.149%
Geraniol	1.424	0.142%
Sabinene	0.851	0.085%
Isoborneol	0.803	0.08%
alpha-Terpinene	0.752	0.075%
Gamma-Terpinene	0.632	0.063%

**Total Terpenes: 78.669%**

Detailed Terpenes Analysis is on the following page

*Xueli Gao*  
Xueli Gao  
Ph.D., DABT  
Lab Toxicologist

*Aixia Sun*  
Aixia Sun  
D.H.Sc., M.Sc., B.Sc., MT (AAB)  
Lab Director/Principal Scientist



Definitions and Abbreviations used in this report: \*Total CBD = CBD + (CBD-A \* 0.877), \*Total THC = THCA-A \* 0.877 + Delta 9 THC, \*CBG Total = (CBGA \* 0.877) + CBG, \*CBN Total = (CBNA \* 0.877) + CBN, \*Other Cannabinoids Total = CBC + CBDV + THCV + THCV-A, \*Total Detected Cannabinoids = CBD Total + CBG Total + CBN Total + THC Total + CBC + CBDV + THCV + THCV-A, \*Analyte Details above show the Dry Weight Concentrations unless specified as 12% moisture concentration. (mg/ml) = Milligrams per Milliliter, LOQ = Limit of Quantitation, LOD = Limit of Detection, Dilution = Dilution Factor (ppb) = Parts per Billion, (%) = Percent, (cfu/g) = Colony Forming Unit per Gram (cfu/g) = Colony Forming Unit per Gram, , LOD = Limit of Detection, (µg/g) = Microgram per Gram (ppm) = Parts per Million, (ppm) = (µg/g), (aw) = aw (area ratio) = Area Ratio, (mg/Kg) = Milligram per Kilogram

This report shall not be reproduced, without written approval, from ACS Laboratory. The results of this report relate only to the material or product analyzed. Test results are confidential unless explicitly waived otherwise. Accredited by a third-party accrediting body as a competent testing laboratory pursuant to ISO/IEC 17025 of the International Organization for Standardization.





License No. 800025015  
FL License # CMTL-0003  
CLIA No. 10D1094068

# Certificate of Analysis

Compliance Test

**REEFER'S BAY**  
275 MEDICAL DR 4783  
CARMEL, IN 46038

Batch # 210825-LC-T  
Batch Date: 2021-08-25  
Extracted From: Hemp

Test Reg State: Florida

Order # REE210826-080011  
Order Date: 2021-08-26  
Sample # AABU998

Sampling Date: 2021-08-27  
Lab Batch Date: 2021-08-27  
Completion Date: 2021-09-03

Initial Gross Weight: 6.822 g



## Terpenes - FL

Specimen Weight: 33.000 mg

Tested  
(GC/GCMS)

Dilution Factor: 200.000

Analyte	LOQ (%)	Result (mg/g)	(%)	Analyte	LOQ (%)	Result (mg/g)	(%)
(R)-(+)-Limonene	0.02	194.736	19.474	trans-Caryophyllene	0.02	183.845	18.384
beta-Myrcene	0.02	150.280	15.028	Linalool	0.02	46.803	4.680
Farnesene	0.02	31.126	3.113	beta-Pinene	0.02	30.660	3.066
Valencene	0.02	30.429	3.043	alpha-Pinene	0.02	27.006	2.701
alpha-Humulene	0.02	15.034	1.503	Total Terpineol	0.02	14.993	1.499
alpha-Bisabolol	0.02	13.540	1.354	Sabinene Hydrate	0.02	12.953	1.295
alpha-Phellandrene	0.02	8.860	0.886	Camphene	0.02	5.420	0.542
Terpinolene	0.02	3.962	0.396	Ocimene	0.014	3.674	0.367
Camphors	0.04	2.818	0.282	Caryophyllene oxide	0.02	2.447	0.245
3-Carene	0.02	2.172	0.217	trans-Nerolidol	0.02	1.486	0.149
Geraniol	0.02	1.424	0.142	Sabinene	0.02	0.851	0.085
Isoborneol	0.02	0.803	0.080	alpha-Terpinene	0.02	0.752	0.075
Gamma-Terpinene	0.02	0.632	0.063	Pulegone	0.02	<LOQ	<LOQ
Nerol	0.02	<LOQ	<LOQ	(+)-Cedrol	0.02	<LOQ	<LOQ
Isopulegol	0.02	<LOQ	<LOQ	Hexahydrothymol	0.02	<LOQ	<LOQ
Guaial	0.02	<LOQ	<LOQ	Geranyl acetate	0.02	<LOQ	<LOQ
Fenchyl Alcohol	0.02	<LOQ	<LOQ	Eucalyptol	0.02	<LOQ	<LOQ
cis-Nerolidol	0.02	<LOQ	<LOQ	Borneol	0.04	<LOQ	<LOQ
alpha-Cedrene	0.02	<LOQ	<LOQ	Fenchone	0.02	<LOQ	<LOQ

**Total Terpenes: 78.669%**

*Xueli Gao*  
Xueli Gao Lab Toxicologist  
Ph.D., DABT

*Aixia Sun*  
Aixia Sun Lab Director/Principal Scientist  
D.H.Sc., M.Sc., B.Sc., MT (AAB)



Definitions and Abbreviations used in this report: \*Total CBD = CBD + (CBD-A \* 0.877), \*Total THC = THCA-A \* 0.877 + Delta 9 THC, \*CBG Total = (CBGA \* 0.877) + CBG, \*CBN Total = (CBNA \* 0.877) + CBN, \*Other Cannabinoids Total = CBC + CBDV + THCV + THCV-A, \*Total Detected Cannabinoids = CBD Total + CBG Total + CBN Total + THC Total + CBC + CBDV + THCV + THCV-A, \*Analyte Details above show the Dry Weight Concentrations unless specified as 12% moisture concentration. (mg/ml) = Milligrams per Milliliter, LOQ = Limit of Quantitation, LOD = Limit of Detection, Dilution = Dilution Factor (ppb) = Parts per Billion, (%) = Percent, (cfu/g) = Colony Forming Unit per Gram (cfu/g) = Colony Forming Unit per Gram, , LOD = Limit of Detection, (µg/g) = Microgram per Gram (ppm) = Parts per Million, (ppm) = (µg/g), (aw) = aw (area ratio) = Area Ratio, (mg/Kg) = Milligram per Kilogram



This report shall not be reproduced, without written approval, from ACS Laboratory. The results of this report relate only to the material or product analyzed. Test results are confidential unless explicitly waived otherwise. Accredited by a third-party accrediting body as a competent testing laboratory pursuant to ISO/IEC 17025 of the International Organization for Standardization.